



Brandell e-Scr@pbook

A monthly report on our life in Vanuatu



In this month's issue...

Of course we have to lead this month's issue with a mention of the arrival of our new baby boy, Titus Taylor. Yahoo!!!

We've also given an update on the Port Vila congregation (which

includes the latest on the building project).

Shawnda and I both started new personal Bible studies this month.

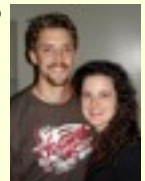
Thanks so much for your continued love and support!

From the home-front...

As most, if not all of you know, our "home-front" completely changed this month with the arrival of Titus. He's a joy - such a good baby. I prayed for a sweet natured baby who would be able to be flexible with all of the crazy things that go on in the life of missionary families. Titus has been easy going so far. As you can imagine, my life is completely consumed with caring for Titus and learning how to be the best mother I can be for him. I still have time while he's napping to get things done around the house, but while he's awake, I can't seem to tear myself away!

Thank you God for this precious baby to cherish, teach, and train to follow You! And welcome home Titus!

Please pray for the adoption process to go quickly and smoothly. We'll keep you updated.



We love you all.

- Shawnda

ADOPTION UPDATE

We have been saying "any day now" for what seems like at least a month. That day finally came on November 24. Titus Taylor was born at 4:30am, weighing in at 6lbs. 6oz. He and his birth mother came through the delivery without a problem. Titus came home with us the next day, and we have thoroughly enjoyed every minute of his presence! We have set up a website to keep you up to date with our little darling. It can be accessed at www.missionvanuatu.com/brandell/titus. We hope you enjoy staying in touch with him. Please be praying for a speedy and problem-free adoption process. We are scheduled to sign the adoption papers in early December, and if all goes well it will be finalized within a month.





PROGRESS: PORT VILA CONGREGATION AND BUILDING PROJECT

You may recall our mentioning that though the building is not yet completed, we have been meeting in it for Sunday morning worship for almost two months now. This month we had a “record attendance” of 25 adults and 20 kids, which was exciting (and a much needed pick-me-up for me since we had TWO flat tires on the way to church that morning...which I changed in the 100+ degree weather).



It is still a very spiritually-young congregation, but we continue to move ahead. I am especially excited by Flexon and his growth as a leader (he’s the one greeting people in the far left of the photo above). He was converted in June 2005, and has grown a lot over the last year and a half. He is now a part of our regular monthly preaching schedule, and filled in once this month for another local on only a day’s notice. Every Sunday he takes a leadership role in our worship period, and does an admirable job leading songs, prayers and the Lord’s Supper. Please be praying for Flexon and his wife, Fiona, as they continue to grow in the Lord.



We again made a good amount of progress on the building itself this month. We completed the roof by attaching Natangora leaves (which we often refer to in the States as “thatch”) that were woven together for us by the Christians in Epau Village. Because of the tremendous amount of wind we have at our location, we had to secure the Natangora by placing chicken wire over it. The whole process took three days to complete. We are deeply indebted to Tom and Pbles for their invaluable assistance in this undertaking. Meanwhile, Mike was busy with the back-breaking (literally) task of painting the ceiling. It took four coats of white paint to finally cover the area, but we got it finished.



I contracted a company to design and provide the materials for a small veranda to cover the main entrance to the building back in August. After more than two months of hearing “that should have been done already, I will call you this afternoon” to no avail, I gave up on them and built it myself. It blocks the sun and rain effectively, so I guess it works. Near the end of the month, Tom and I attached the remaining lengths of Natangora to what I refer to as “the triangles” of the building (I am sure they have a professional name, but I am not a professional).



Unfortunately the hardware store is currently out of paint, which means we are on hold temporarily (during that time I will install the lights and fans). The paint should be arriving any day now, at which time we will begin painting the interior and exterior walls. Once the paint is on, we will install the doors and windows...and wah-lah, a completed building!



Additionally, just before month’s end, a man who runs a sawmill came by the building and offered to remove a HUGE fallen tree from our land. It’s really a win-win situation since we get rid of that thing (I had no idea what we were going to do to get rid of it), and it’s free timber for his business. Plus, he is going to give us some the 2x4’s...what a deal!

Please be praying for the congregation here in Vila, and that the building can be an effective resource for the Lord’s work here in the capital city.



NEW PERSONAL BIBLE STUDIES

One day while I was working on the building in Vila, Claude drove up and introduced himself. He asked if we had begun meeting in the building, and what time we started worship on Sunday morning. I would later find out that he is married to RoseMary, who is the grand-daughter of Eddie Karris. RoseMary was raised in Eton Village and was converted there many years ago. Unfortunately, since moving to Vila she has discontinued attending worship. When she saw the building's sign go up, she asked her husband to go and find out when they could start worshipping with us. A following Sunday, in a rare turn of events, Claude actually asked me to study with him before I asked him! We have studied 4 times now, and I believe he is very close to making a life-changing decision. We are also grateful that RoseMary has renewed her interest and dedication to the body of Christ.



Shawnda also began a new study this month with Nesta. She had attended worship a couple of times in the past, but since we moved into the new building she has been more regular as it is within walking distance of her house (she lives on "the farm" we often refer to). Nesta has shown significant interest and Shawnda tells me their first study together went well.

Please be praying for Claude, RoseMary, and Nesta, that their faith will sprout and grow as a result of our study of God's Word.

JUST FOR FUN

I thought I would throw these in just in case you forgot how crazy my wife is...and it looks like she has found her match. She's a keeper!

